

FASTECH

Fast, Accurate, Smooth Motion Control

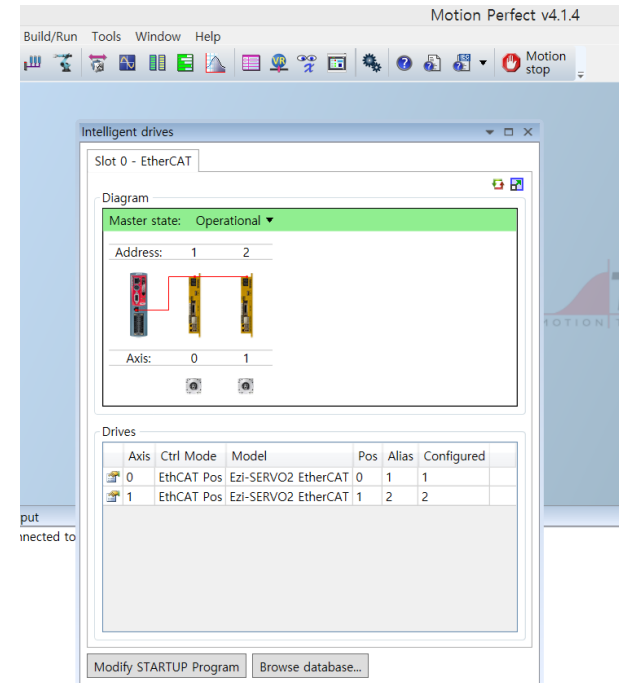
Ezi-SERVOII-EC operating manual for TRIO 'MC4N'



Ezi-SERVO[®]
Closed Loop Stepping System

■ ESI(XML) registration

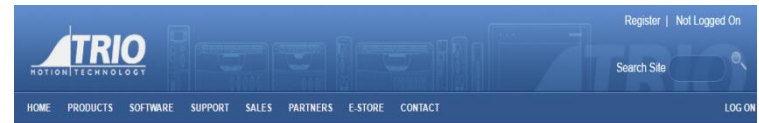
- ❑ There is no need for user registration process of FASTECH ESI file (XML) to TRIO MC4N master
- ❑ FASTECH's ESI (XML) file has been sent to TRIO already, and TRIO has registered all related information on common firmware of TRIO MC4N EtherCAT master .
- ❑ When click to intelligent drives from Tools menu , current connected Drive axis can be checked.
- ❑ USER can use FASTECH Drive with TRIO MASTER MC4N by program making directly to use of TRIO BASIC tool , or to load the Premade program .



Program installation

☐ <http://www.triomotion.com/> site access -> user registration

➔ To download program , User registration is required.



Trio User Registration

Please fill in your details in the boxes provided below in order to complete your registration for the Trio Motion web-site. Boxes marked with * are mandatory.

First Name	<input type="text" value="Yunwoo"/>	*
Surname	<input type="text" value="Oh"/>	*
E-mail Address	<input type="text" value="ywoh@fastech.co.kr"/>	*
Handle (to be used in the Trio Forum)	<input type="text"/>	*
Company	<input type="text"/>	*
Address 1	<input type="text"/>	
Address 2	<input type="text"/>	
City	<input type="text"/>	
State / Region / County	<input type="text"/>	*
Country	<input type="text" value="Please Select"/>	*
Postcode	<input type="text"/>	



MC664-X

NEW from Trio

The new MC664-X features a Quad Core 1GHz A9 processor allowing up to 128 axes and 50us servo updates for 8 axes. It has built-in EtherCAT and also supports a wide variety of other communication protocols.
Trio's highest performance and most flexible Motion Coordinator!

MC508...

NEW from Trio

The MC508 is a high specification Motion Coordinator using a high performance ARM Cortex A9 800 Mhz Processor, with eight Voltage outputs and eight flexible axis ports, that can be configured for up to sixteen pulse and direction output axes or eight closed loop servo axes.

Program installation

After User registration, to click Software menu from Home toolbar




Register | Not Logged On
Search Site

HOME PRODUCTS SOFTWARE SUPPORT SALES PARTNERS E-STORE CONTACT LOG ON


3D..Visualisation

Vis Machines... Robots... Live 3D motion s...
Rotate, pan, zoom in XYZ

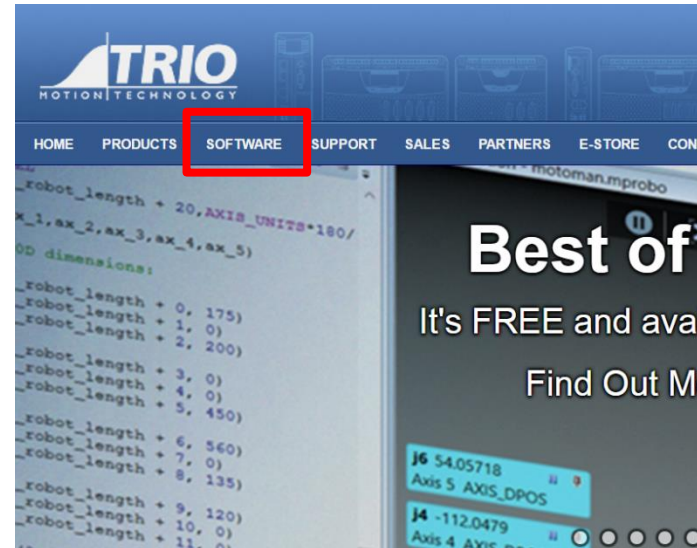
NEW!
Motion Perfect v4
READ MORE



MC664-X
NEW from Trio
The new MC664-X features a Quad Core 1GHz A9 processor allowing up to 128 axes and 50ms servo updates for 8 axes. It has built-in EtherCAT and also supports a wide variety of other communication protocols. Trio's highest performance and most flexible Motion Coordinator



MC508...
NEW from Trio
The MC508 is a high specification Motion Coordinator using a high performance ARM Cortex A9 800 Mhz Processor with eight Voltage outputs and eight flexible axis ports, that can be configured for up to sixteen pulse and direction output axes or eight closed loop servo axes.



HOME PRODUCTS **SOFTWARE** SUPPORT SALES PARTNERS E-STORE CONT

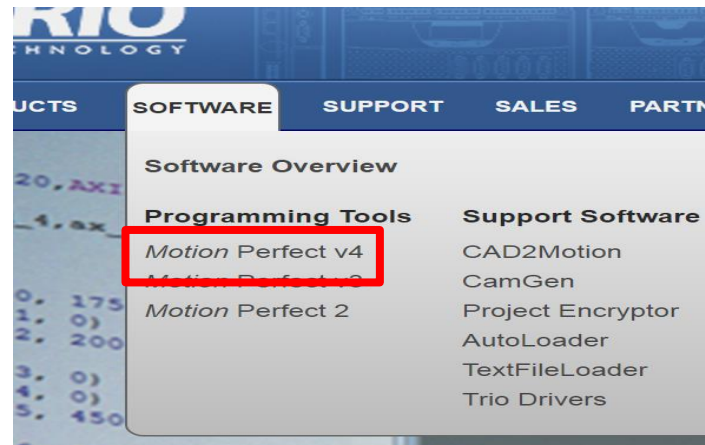
Best of

It's FREE and avail
Find Out Mo

```
robot_length + 20, AXIS_UNITS=180/  
x_1, ax_2, ax_3, ax_4, ax_5)  
3D dimensions:  
robot_length + 0, 175)  
robot_length + 1, 0)  
robot_length + 2, 200)  
robot_length + 3, 0)  
robot_length + 4, 0)  
robot_length + 5, 450)  
robot_length + 6, 560)  
robot_length + 7, 0)  
robot_length + 8, 135)  
robot_length + 9, 120)  
robot_length + 10, 0)  
robot_length + 11, 0)
```

J6 54.05718
Axis 5 AXIS_DPOS
J4 -112.0479
Axis 4 AXIS_DPOS

Select to Motion Perfect V4



PRODUCTS SOFTWARE SUPPORT SALES PARTNERS

- Software Overview
- Programming Tools**
 - Motion Perfect v4**
 - Motion Perfect 3
 - Motion Perfect 2
- Support Software
 - CAD2Motion
 - CamGen
 - Project Encryptor
 - AutoLoader
 - TextFileLoader
 - Trio Drivers

Program installation

Program & F/W download

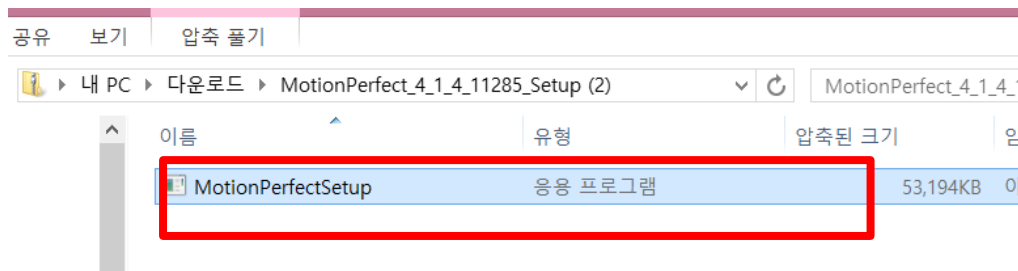


Motion Perfect v4 is FREE to download.

⚠ 2.0196 or newer firmware is required to run MPv4.

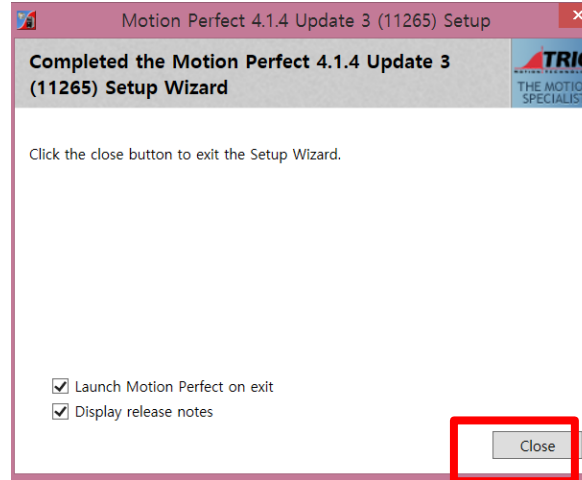


After Program download, execute the set up program

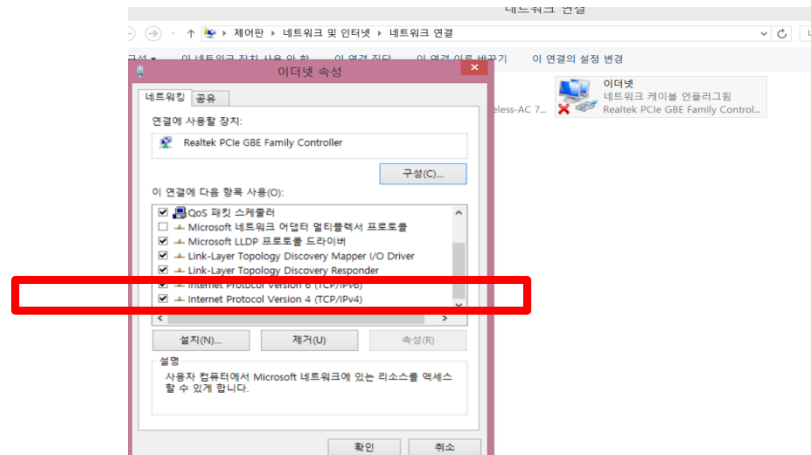
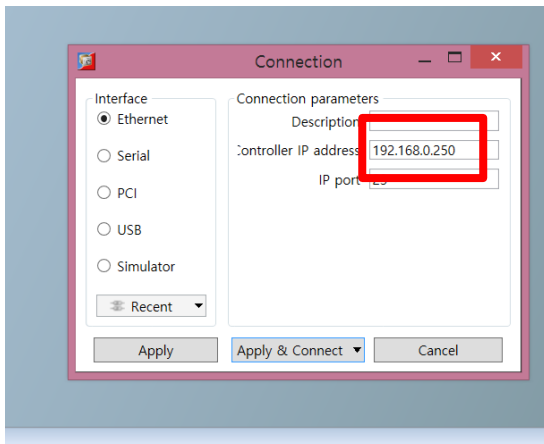


Program installation

program installation

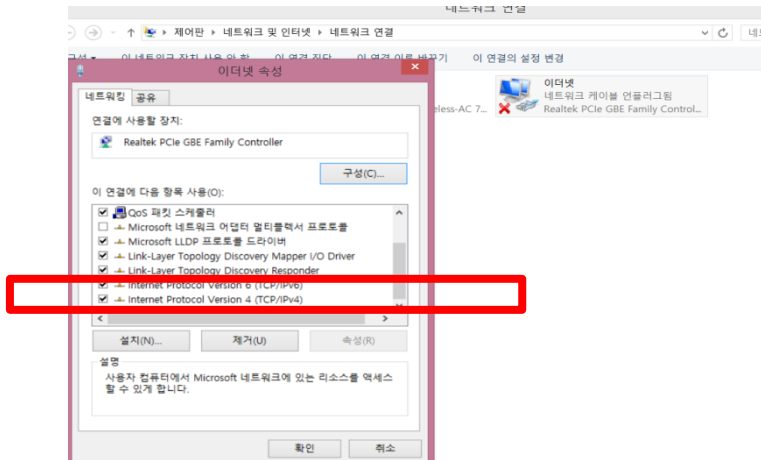


To connect Ethernet communication connection after controller Ethernet IP check & change setting condition (192.168.0.250)

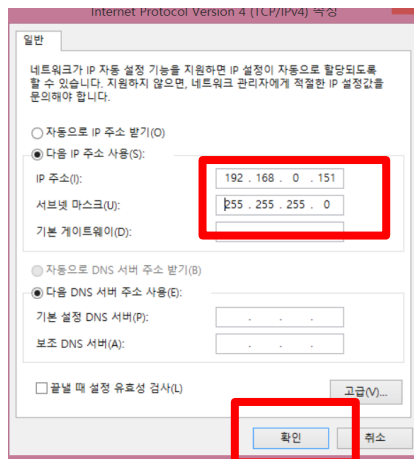


Program installation

Click to Ethernet property (internet protocol version 4 (TCP/IPv4)



Input the changed address not to conflict to controller IP (192.168.0.250) → ex) (192.168.0.251)



■ Drive connection with Master

□ Master connection



Ethernet connection port to PC (Pc internet port) _ Use for Master program set up

PORT for EtheCAT cable connection (Opposite connection port is “ECAT IN” port of FASTECH EtherCAT Drive)

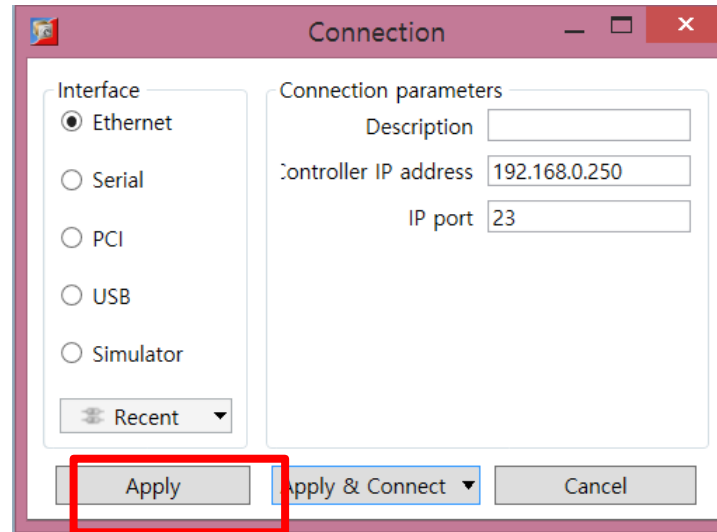
Ground connection port

24VDC connection port

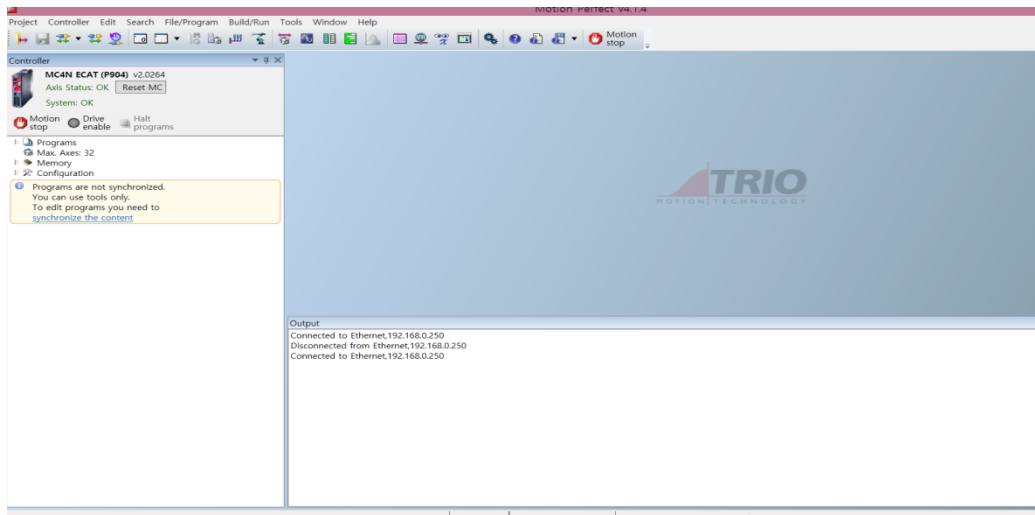
□ Input power & connect to Motion Perfect v4 program

Program Operation

Connect to Program



Activating program window



Program Operation

After clicking the controller menu from the toolbar, click to Load firmware menu to download F/W (TRIO master F / W Lim _ Our Drive F / W containing information)

The screenshot displays the Motion Perfect v4.1.4 software interface. The main window shows the 'Controller' menu highlighted in the toolbar. The 'Load Firmware' dialog box is open, displaying a warning message:

Warning
Please read the following very carefully

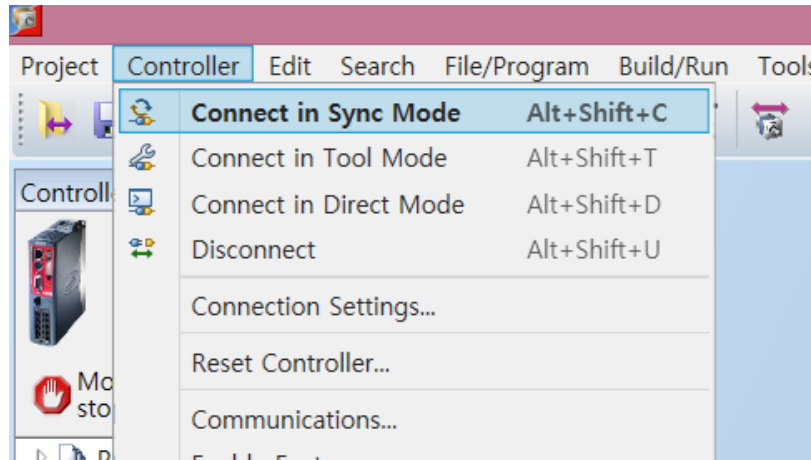
- 1) This process will completely overwrite the existing firmware with a new version
- 2) Make sure that all the drives and actuators are disabled as the servo and I/O control will be lost for the duration of the load
- 3) Make sure that the programs on the controller have been saved before continuing as this process will erase the contents of the controller
- 4) This process may take several minutes to complete!!!

Press Next to continue.

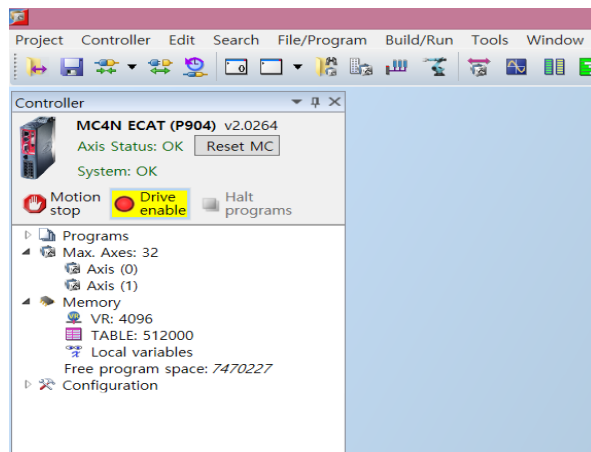
Buttons: Next >>, Close

Program Operation

- ❑ After the F/W down load, click to sync mode from Controller menu in the toolbar

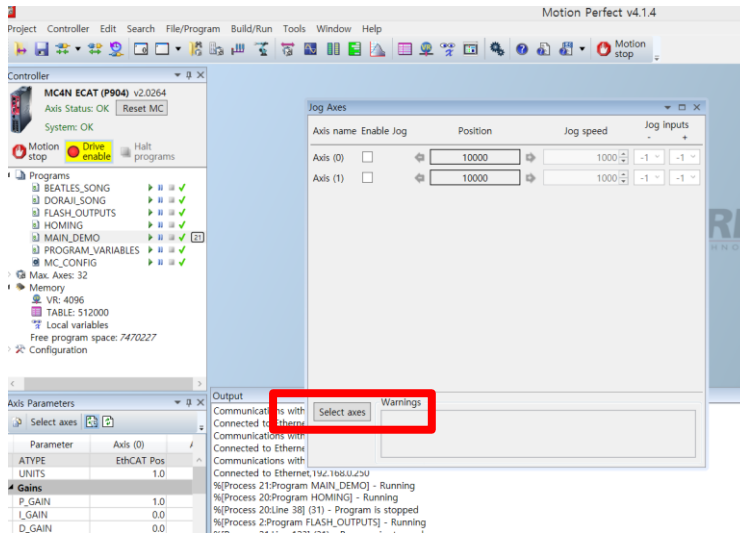


- ❑ Activating the Drive Enable

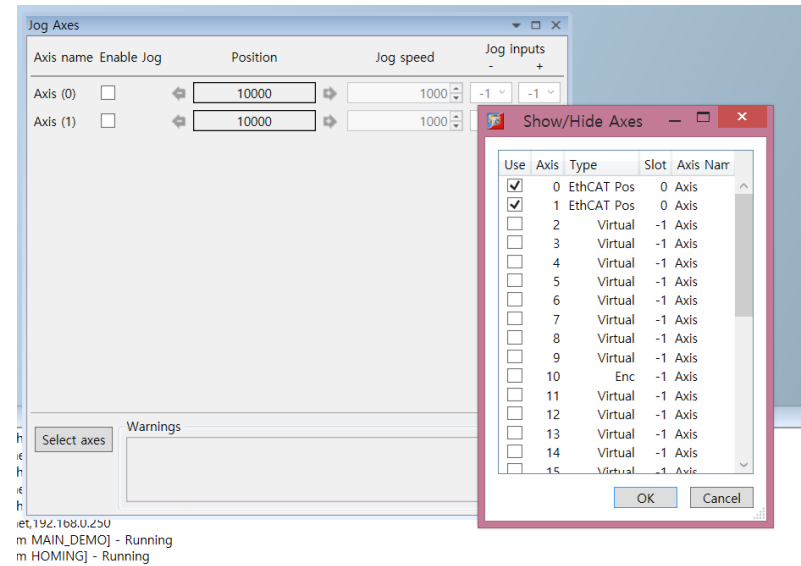


Program operation (Jog motion)

- Select Jog mode to click to jog Axes on the Tools menu



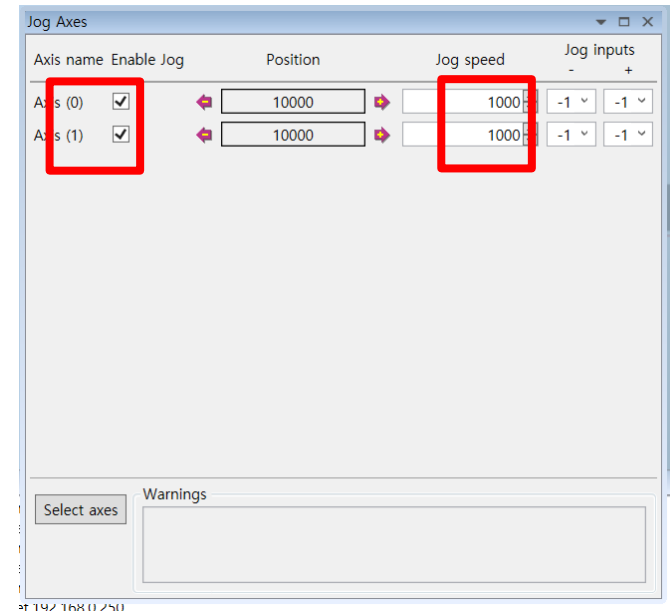
- Click to Select axes to assign the axes



Program operation (Jog motion)

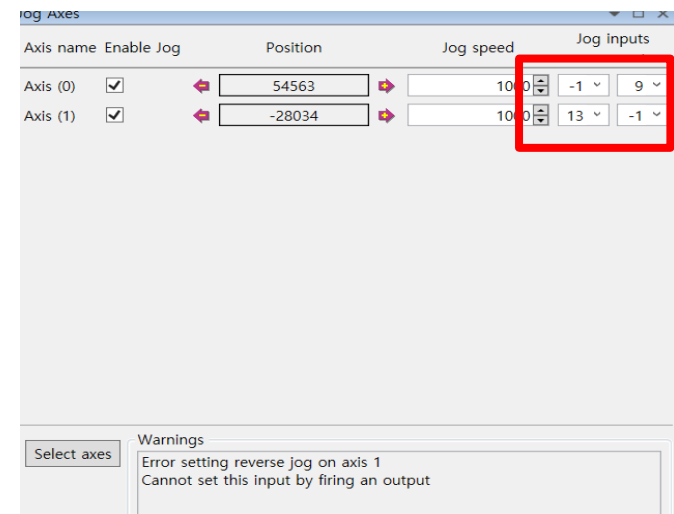
Jog axes setting

1. Click to each axes to activate
2. Setting the jog speed
3. Jog input setting
 - Jog input - / +Each Items can be driven by the specified value changing
 - - is CCW direction motion / + is CW direction motion



Jog motion

1. The axis to specified to -1 is does not operating jog motion and the other axis to specified to +1 operating jog motion as set to jog speed
2. If all axis to change to - value , Jog motion will stop.



**We are a pioneer changing
the history of step motor !!**

